

Influenza Weekly Report

2015 Week 44 (November 01 – 07) through 2016 Week 44 (October 30 – November 05)

Department of Health and Human Services
Division of Public and Behavioral Health
Office of Public Health Informatics and Epidemiology



Brian Sandoval
Governor
State of Nevada

Richard Whitley, MS
Director
Department of Health and Human Services

Cody L. Phinney, MPH
Administrator
Division of Public and Behavioral Health

John DiMuro, DO, MBA
Chief Medical Officer
Division of Public and Behavioral Health

*November 2016
Edition 1.0*

Data for the graphs and tables on the following pages are provisional and may be updated as additional information becomes available.

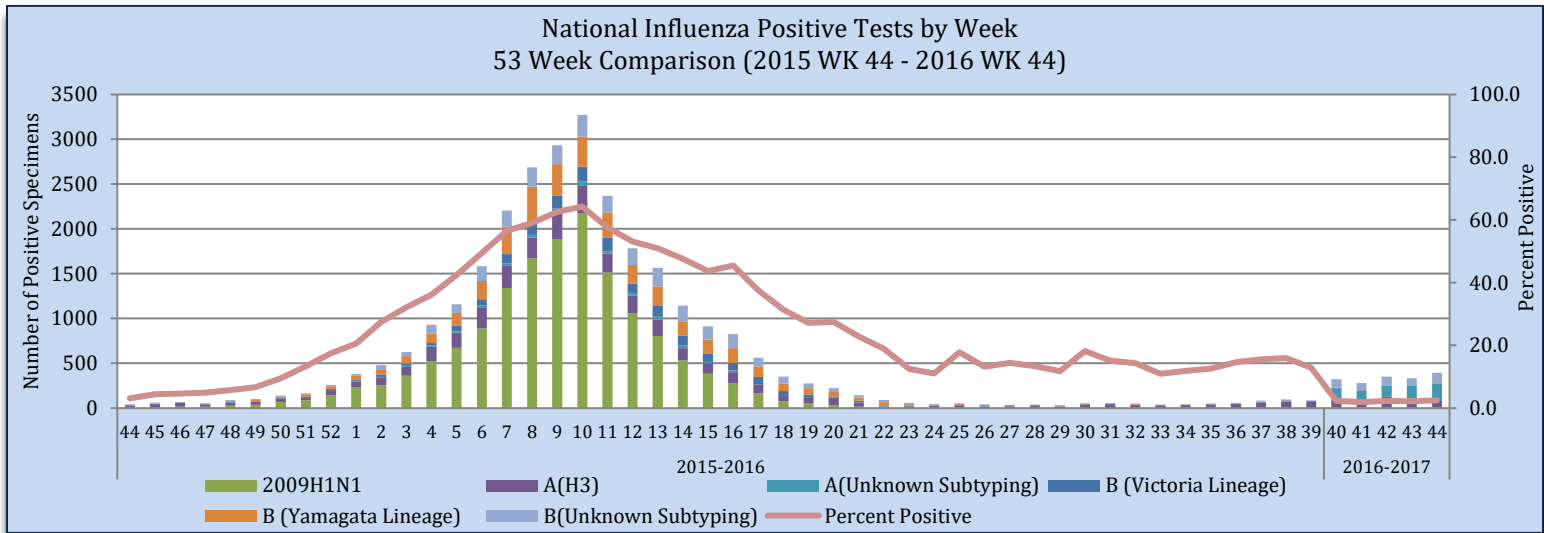
Purpose

The purpose of this report is to provide an overview of and statistics for the influenza season in Nevada for the local public health authorities, sentinel providers and the public.

Influenza-Like Illness Network Surveillance (ILINet)

Respiratory specimens are tested for influenza by the World Health Organization (WHO) and National Respiratory and Enteric Virus Surveillance System (NRVESS) collaborating laboratories by sub-type. During week 44, there were 16,083 specimens collected and tested for influenza, of those 396 were positive (2.5%).

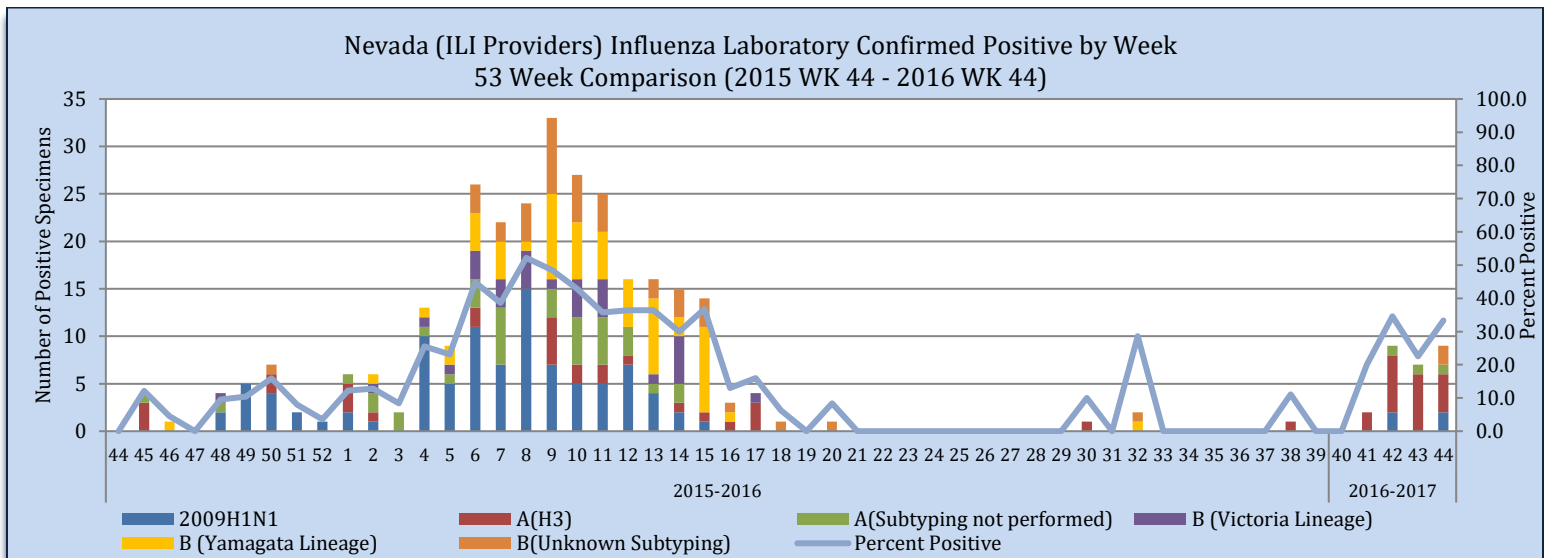
Figure 1



Source of Data: CDC: FluView Weekly Report.

The Nevada total includes laboratory tests for all Nevada residents including out of state laboratories. During week 44, there were 27 specimens collected and 9 were positive (33.3%).

Figure 2



Source of Data: CDC: ILINet.

Nevada State Public Health Laboratory (NSPHL) has tested 31 specimens for influenza from sentinel providers, of which there have been 20 were positive (64.5%). Southern Nevada Public Health Laboratory (SNPHL) has tested 14 specimens this season of which there have been 0 positives. Nationally, there have been 74,542 specimens sent to the WHO and NERVSS laboratories of which 1,686 have been positive or 2.3%. The national numbers in Table 1 are reflected in Figure 1. The state of Nevada data in Table 1 is reflected in Figure 2. The Nevada total includes laboratory test for all Nevada residents including out of state laboratories.

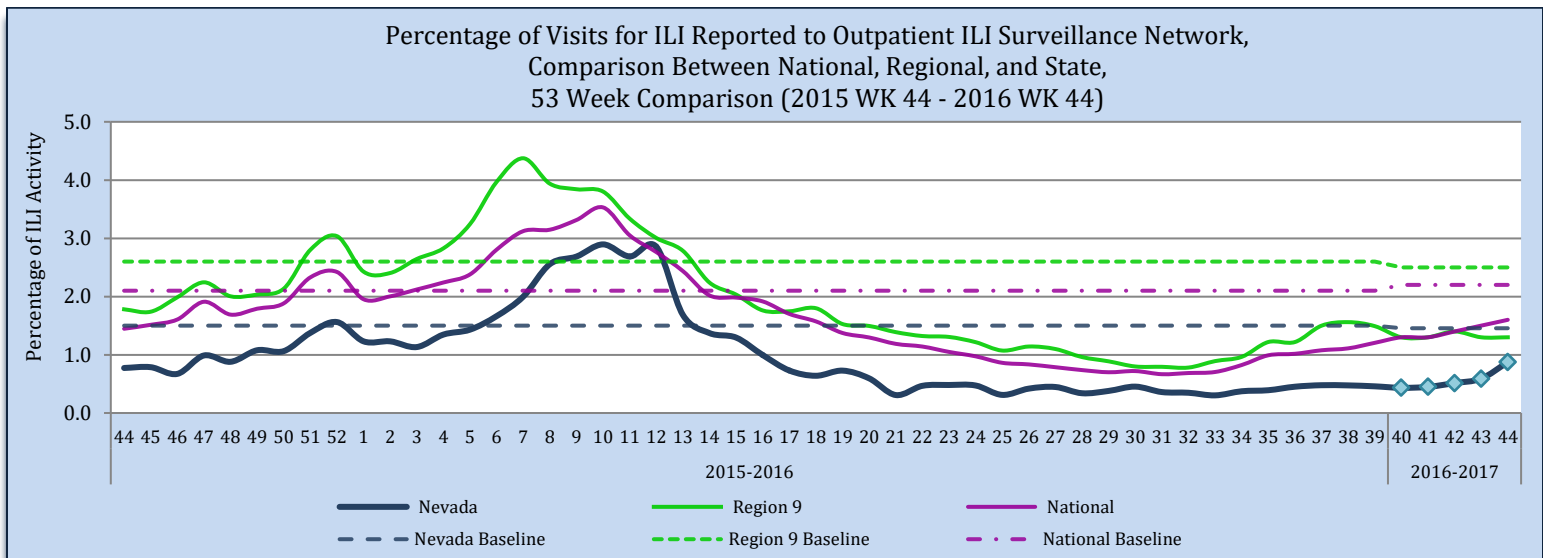
Table 1

ILINet Surveillance: Influenza Specimens Tested State and Nationally										
	NSPHL	SNPHL	State of Nevada (Week 44)		State of Nevada (Season)		National (Week 44)		National (Season)	
			#	%	#	%	#	%	#	%
Specimens Tested	31	14	27		102		16,083		74,542	
Positives to Influenza	20	0	9	33.3	27	26.5	396	2.5	1,686	2.3
Influenza A:	20	0	7	77.8	25	92.6	274	69.2	1,182	70.1
A (2009 H1N1)	3	0	2	28.6	4	16.0	10	3.6	51	4.3
A (H3)	17	0	4	57.1	18	72.0	71	25.9	448	37.9
A (Sub-typing not performed)	0	0	1	14.3	3	12.0	193	70.4	683	57.8
Influenza B:	0	0	2	22.2	2	7.4	122	30.8	504	29.9
B (Victoria Lineage)	0	0	0	0.0	0	0.0	3	2.5	22	4.4
B (Yamagata Lineage)	0	0	0	0.0	0	0.0	1	0.8	18	3.6
B (Sub-typing not performed)	0	0	2	100	2	100	118	96.7	464	92.1

Source of Data: CDC: FluView Report and CDC: ILINet.

Influenza-like illness (ILI) Surveillance Network has each sentinel providers report the number of patients that meet the ILI case definition and number of patients that visit the provider weekly. The “percentage of visits” is the number of ILI patients divided by the total number of patients visit per week. Nevada’s ILI percentage of visits to providers for week 44 is 0.9% and is below the state baseline 1.5%. Region 9 ILI percentage for week 44 is 1.3% and is below the region baseline 2.5%. Region 9 includes the following states/territory: Arizona, California, Guam, Hawaii, and Nevada. The national ILI percentage for week 44 is 1.6% and is below the national baseline 2.2%.

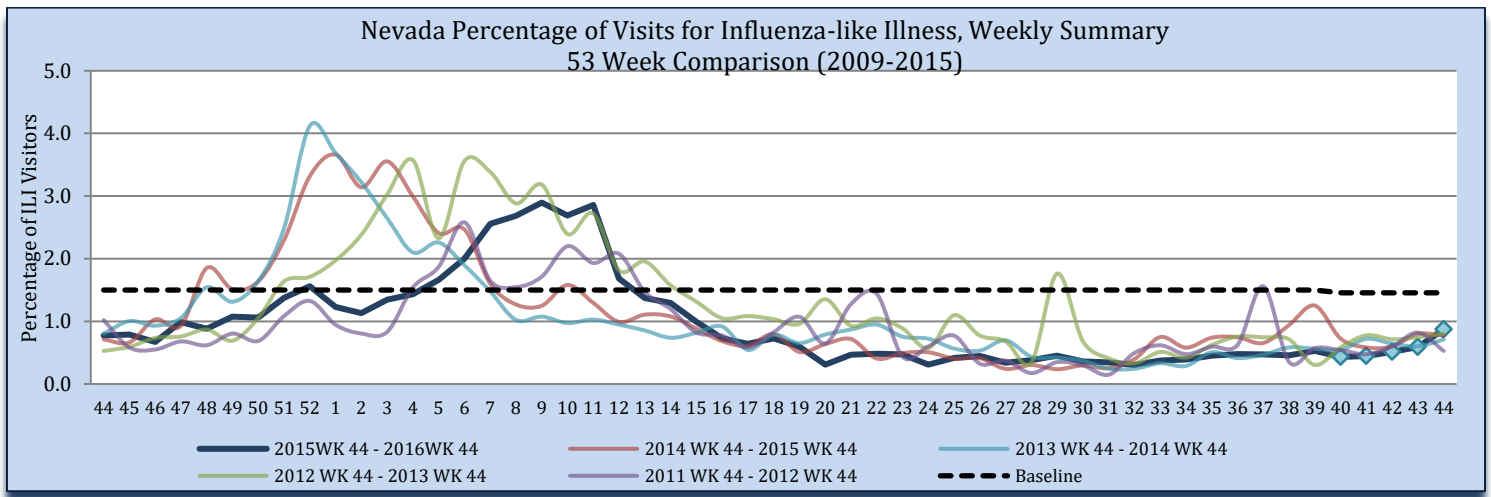
Figure 3



Source of Data: CDC: Flu View Report and CDC: ILINet.

During week 44, 0.9% of visits to sentinel providers were due to ILI; this is lower than the 2015-2016 influenza season (.8%). There were 17,868 patients seen by ILI providers during week 44, of which 156 patients presented with ILI; week 44 of 2015, there were 131 patients seen with ILI (16,948 total patients seen).

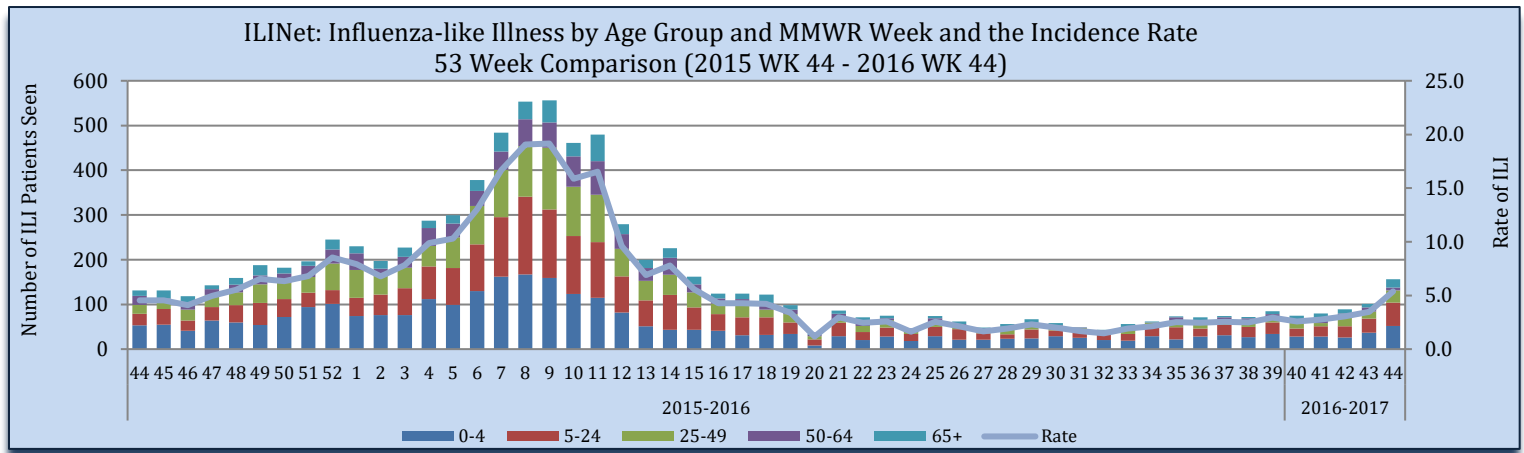
Figure 4



Source of Data: CDC: ILINet.

Influenza-like Illness is reported by age groups, during week 44, patients age 0-4 and 5-24 were the greatest number of patients seen with ILI, at 52 patients seen. The rate for week 44 is 5.4 per 100,000 population. The rate is calculated by the number of patients presented with ILI, divided by the state population, multiplied by 100,000. The estimated state population for 2016 is 2,902,853.

Figure 5



Source of Data: CDC: ILINet.

Influenza Positive Surveillance (NBS and NETSS)

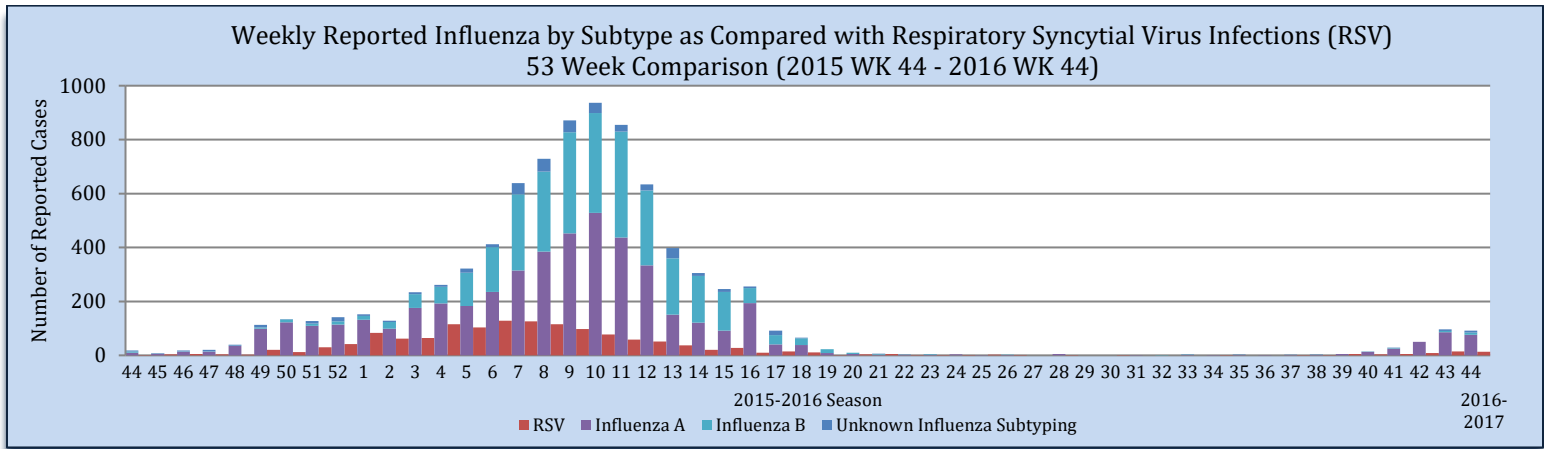
Positive cases of influenza are reported to the state health authority for surveillance purposes. Table 2 and Figure 6 reflect all positive influenza cases reported to the state. Types of influenza testing include commercial rapid diagnostic test (rapid), viral culture, fluorescent antibody, enzyme immunoassay, RT-PCR (PCR), and Immunohistochemistry. The two most common test types in Nevada are Rapid and PCR tests. During week 44, there were 92 influenza cases reported to the state, 76 influenza A and 8 influenza B.

Table 2

Reporting Jurisdiction	Reported Influenza Cases by County Jurisdiction and Influenza Type							
	Current Week (Week 44)				Cumulative Influenza Season			
	A	B	Unknown	Total	A	B	Unknown	Total
Carson City Health and Human Services	4	0	0	4	10	0	0	10
Rural Community Health Services	12	0	0	12	61	0	0	63
Southern Nevada Health District	8	3	3	14	46	6	5	57
Washoe County Health District	52	5	5	62	131	11	9	151
State of Nevada	76	8	8	92	250	17	14	281

Source: OPHIE: NBS and SNHD: NETSS.

Figure 6



Source of Data: OPHIE: NBS and SNHD: NETSS.

Hospitalizations

There were 4 hospitalization associated with influenza reported to the state health authority for week 44.

Table 3

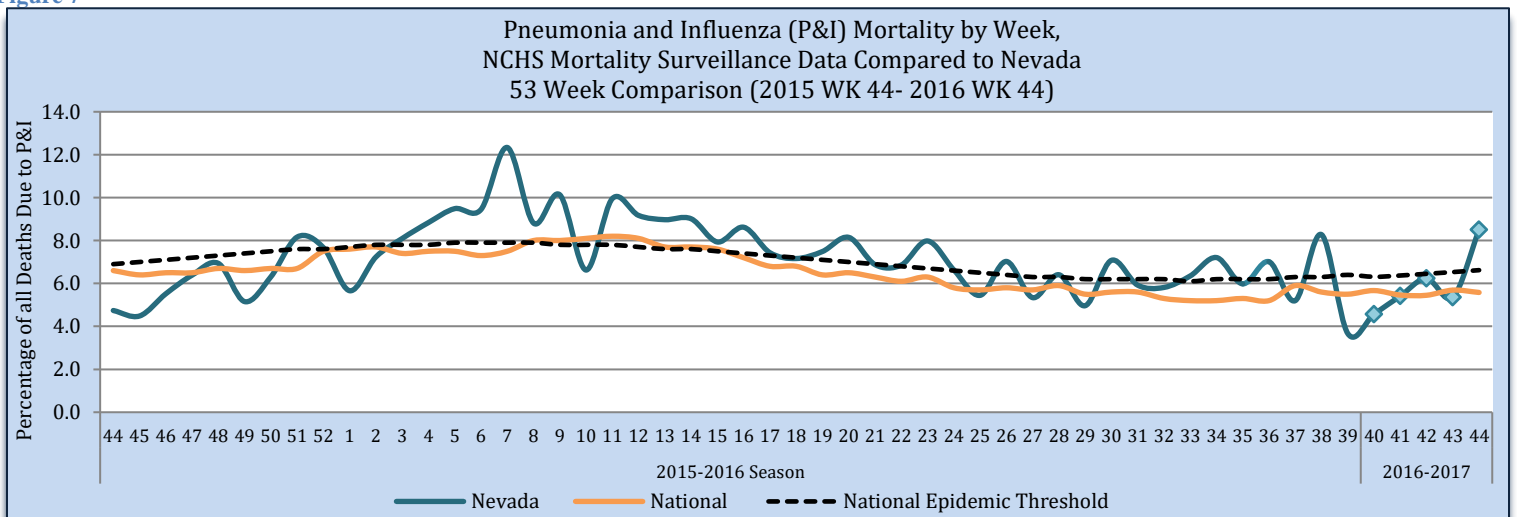
Reporting Jurisdiction	Influenza Hospitalizations			
	Current Week (Week 44)		Cumulative Influenza Season	
	#	%	#	%
Carson City Health and Human Services	0	0.0	0	0.0
Rural Community Health Services	0	0.0	0	0.0
Southern Nevada Health District	2	50.0	7	33.3
Washoe County Health District	2	50.0	14	66.7
State of Nevada	4	100	21	100

Source: Reported to Office of Public Health Informatics and Epidemiology from each Jurisdiction.

Pneumonia and Influenza (P&I) Mortality Surveillance

The Pneumonia and Influenza (P&I) mortality percentage is the deaths, where Pneumonia or Influenza is listed as the underlying or contributing cause of death, divided by the total deaths in Nevada for each week. As of November 29, there were 30 P&I deaths and 355 total deaths for week 44 in Nevada. The P&I mortality percent for Nevada is above the threshold at 8.5% (threshold 6.6%). Nationally, the P&I mortality is below the national epidemic threshold at 5.6% for week 44.

Figure 7



Source: OVR: WEVRRS and CDC: FluView.

Technical Notes

- Influenza-like illness (ILI): a fever greater than or equal 100°F with cough and/or sore throat
- Percent positive: The number of positive influenza laboratory tests divided by the total number of tests performed.
- Incidence rate is per 100,000 population as estimated by the state demographer.
- Data are subject to changes.

This report contains information from national and state-level data sources. Influenza surveillance data is collected by a various systems, including:

- Influenza-like Illness Network (ILINet): a sentinel surveillance system in collaboration with the Centers for the Disease Control and Prevention (CDC) where outpatient providers report ILI information weekly.
- National Electronic Telecommunication System for Surveillance (NETSS): a system whereby data is transmits to CDC. Influenza data collected through NETSS does not provide influenza sub-typing information.
- National Electronic Disease Surveillance System (NEDSS): a system for collecting data and monitoring disease trends and outbreaks.
- NEDSS Based System (NBS): an implementation of the NEDSS standards. It provides a secure, accurate, and efficient means of collecting, transmitting, and analyzing public health data.

Citations

1. CDC. FluView: A Weekly Influenza Surveillance Report. <http://www.cdc.gov/flu/weekly/pastreports.htm>.
2. Nevada State Demographer's Office. 2003-2020 ASRHO Estimates and Projections. Division of Public and Behavioral Health edition. Vintage 2015.
3. OPHIE. DPBS. BioSense. 2015-2016. Accessed November 2016.
4. OPHIE. DPBH. NBS. 2015-2016. Accessed November 2016.
5. Office of Vital Records (OVR). DPBH. Web Enabled Vital Records Registry System (WEVRRS) [unpublished data]. 2015-2016. Accessed November 2016.
6. Southern Nevada Health District (SNHD). NETSS/Trisano. 2015-2016. Accessed November 2016.

Comments, suggestions, and requests for further information may be addressed to:

NEVADA INFLUENZA SURVEILLANCE PROGRAM
OFFICE OF PUBLIC HEALTH INFORMATICS AND EPIDEMIOLOGY
500 DAMONTE RANCH PKWY, STE 657
RENO, NV 89521
TEL: (775) 684-5289
FAX: (775) 684-5999

Compiled and Written by:

LILIANA E. WILBERT

Recommended Citation:

Division of Public and Behavioral Health. Office of Public Health Informatics and Epidemiology. Influenza Weekly Report, 2015 Week 44 (November 1) through 2016 Week 44 (November 5), Nevada. November 2016 i 44 edition 1.0.

This publication was supported by Cooperative Agreement Number TP000534-02 from the Centers for Disease Control and Prevention and/or Assistant Secretary for Preparedness and Response. Its contents are solely the responsibility of the authors and do not necessarily represent the official views of the Centers for Disease Control and Prevention and/or Assistant Secretary for Preparedness and Response.

